

Real-time Noise Data RTN1 / FEHD Hong Kong Transport Section Whitefield Depot

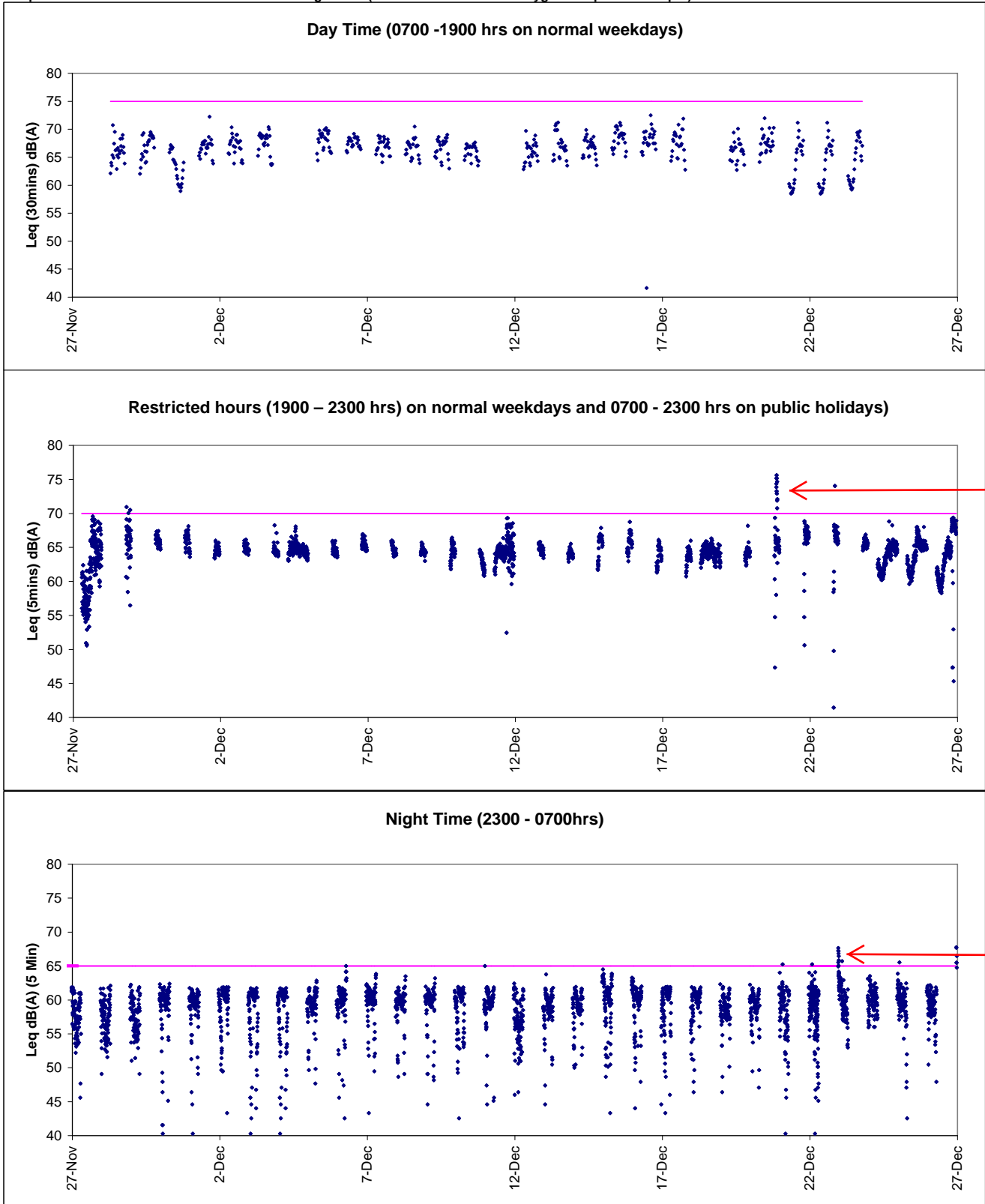
Table with 6 columns of noise data, each column representing a different date in 2010 (07/12, 10/12, 12/12, 14/12, 16/12). Each row contains a timestamp and a noise level value.

Real-time Noise Data RTN1 (FEHD Hong Kong Transport Section Whitefield Depot)

27/12/2010 04:40 60.0
27/12/2010 04:45 59.5
27/12/2010 04:50 57.9
27/12/2010 04:55 59.4
27/12/2010 05:00 58.5
27/12/2010 05:05 57.7
27/12/2010 05:10 57.9
27/12/2010 05:15 58.5
27/12/2010 05:20 58.5
27/12/2010 05:25 56.6
27/12/2010 05:30 60.7
27/12/2010 05:35 58.2
27/12/2010 05:40 58.1
27/12/2010 05:45 59.7
27/12/2010 05:50 58.6
27/12/2010 05:55 53.4
27/12/2010 06:00 54.6
27/12/2010 06:05 53.9
27/12/2010 06:10 54.8
27/12/2010 06:15 57.0
27/12/2010 06:20 54.9
27/12/2010 06:25 52.3
27/12/2010 06:30 61.9
27/12/2010 06:35 61.3
27/12/2010 06:40 61.3
27/12/2010 06:45 47.9
27/12/2010 06:50 61.6
27/12/2010 06:55 60.8
27/12/2010 23:00 67.7
27/12/2010 23:05 67.7
27/12/2010 23:10 65.5
27/12/2010 23:15 65.5
27/12/2010 23:20 66.5
27/12/2010 23:25 64.8

* The exceedance were bolded.

Graphic Presentation of Real Time Noise Monitoring Result (Food and Environmental Hygiene Department Depot)



No construction activity was conducted during Restricted and Night Time period. As there is no construction work near the monitoring station, estimating the noise contributed from Island Eastern Corridor. It is concluded that the exceedances were non-project related.